

Dry Ice Production

Dry Ice Pelletizer P28-D3

part no. 900760



The ASCO Dry Ice Pelletizer P28 is a compact and powerful dry ice machine. Having a production capacity of 280 kg/h (617.3 lb/h) it meets the demands for higher dry ice quantities plus quality and flexibility in the daily working process.

The ASCO Dry Ice Pelletizer P28 is driven by a powerful hydraulic unit featuring instant push button start. All functions are controlled by a Siemens PLC S7-1200 with touch screen. Fully automatic control of oil temperature and dry ice snowing process guarantees continuous dry ice production without any supervision right from push button start.

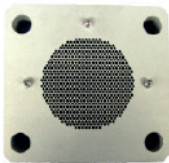
To maximise the CO₂ to dry ice conversion ratio the dry ice pelletizer can be connected to an **ASCO** revert gas recovery system.

Touch screen for good overview and easy operation



Benefits of an in-house dry ice production:

- If for dry ice blasting: More efficient cleaning results, because: the fresher the dry ice, the more efficient the cleaning
- Shorter production stops
- Reduction of dry ice lost due to sublimation
- Decreased logistics expense connected with purchasing and disposing of dry ice



Extruder plate for 3 mm (1/8 in) pellets

The dry ice pelletizer P28 is standardly equipped with an extruder plate for the production of pellets with a diameter of 3 mm (1/8 in).

Specifications

Production capacity:	280 kg/h (617.3 lb/h) +/- 5% at 15-20 bar (217.6 - 290 psi) CO ₂ inlet pressure
Voltage:	400 V / 50 Hz / 3 Ph + PE (other voltages on request)
Max. power consumption:	5.6 kW
Dimensions (L x W x H):	1'560 x 800 x 1'450 mm (61.42 x 31.50 x 57.09 in)
Weight net:	approx. 490 kg (1'080.26 lb) (with hydraulic oil) approx. 440 kg (970.03 lb) (without hydraulic oil)
Weight packed:	approx. 550 kg (1'212.54 lb) (without hydraulic oil)
CO ₂ inlet connection:	1" BSP female
CO ₂ source:	CO ₂ storage tank, liquid phase (15-20 bar) (217.56 - 290.08 psi)




Function and Applications of ASCO Dry Ice Pelletizer P28-D3:

The Dry Ice Pelletizer P28 requires a liquid CO₂ supply (pressure 15-20 bar)(217.6-290.psi) and power supply of 400V/50Hz/ 3 Ph + PE (other voltages available on request). The machine features instant push button start and all functions are controlled by an inbuilt PLC. Dry ice snow is produced in the snowing chamber, pressed and then extruded by a powerful hydraulic unit. Hard, dense dry ice pellets are produced shortly after push button start.

To ensure continuous, reliable operation of the pelletizer, oil temperature, oil level, cycle time, injection time, operation hours, due date of service, motor overload, amount dry ice produced since last start, CO₂ inlet pressure and hydraulic pressure are all monitored and displayed on the touch screen of the P28's PLC.

Options

The ASCO Dry Ice Pelletizer P28 is standardly equipped with an extruder plate for the production of pellets with a diameter of 3 mm (1/8 in). Such pellets are used especially for dry ice blasting purposes. Optional extruder plates for the production of 10 mm (3/8 in) and 16 mm (5/8 in) pellets (for cooling purposes) are also available. The P28, however, can also be delivered standardly equipped with such an extruder plate.

Pellet size	 3 mm (1/8 in)	 10 mm (3/8 in)	 16 mm (5/8 in)
Operating range	Dry Ice Blasting	Cooling purposes	Cooling purposes

Key Features of ASCO Dry Ice Pelletizer P28-D3:

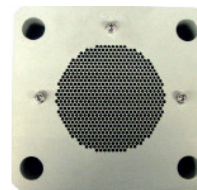
- **PLC SIEMENS-S7-1200** - controls the complete process, injection and hydraulic
- **Siemens touch screen 7"** - with different access levels and information regarding the started production
- **Independent performance** - very constant production, independent of pressure and temperature in the range of 15-20 bar (217.56 -290.1 psi).
- **Integrated production control system**- definition and supervision of production quantity
- **High process reliability** - optimised process monitoring provides optimal performance and increases process reliability
- **Easy maintenance / optimal service planning** - comprehensive error history, indication on touch screen when next service is due
- **Minimum floor space for high production performance**

Standardly included in the delivery of ASCO Dry Ice Pelletizer P28-D3:

Extruder plate for 3 mm (1/8 in) pellets

Pellets for blasting purposes

part no. 4044250



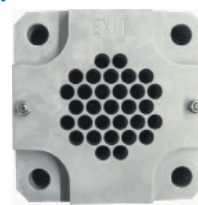
Options for ASCO Dry Ice Pelletizer P28-D3:

Pos. 001

Extruder plate for 10 mm (3/8 in) pellets

Pellets for cooling purposes

part no. 4044255



Pos. 002

Extruder plate for 16 mm (5/8 in) pellets

Pellets for cooling purposes

part no. 4044253



Pos. 003

Spare parts kit

Containing a selection of recommended spares for approx. one to two years of normal operation

part no. 4063235

