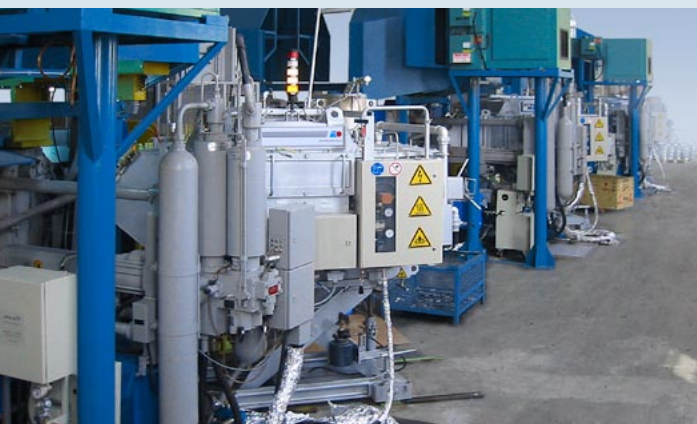




StrikoWestofen Group

Highlights of our WESTOMAT® dosing system at a glance:

- Secure your investment by selecting a partner with more than 4000 WESTOMAT® installations worldwide
- Fully developed overall concept – facilitates trouble-free integration into any die-casting cell with its compact size and compatibility
- Sizes from 450 to 3,100 kgs to suit all die-casting machines and casting capacities
- Long refill intervals thanks to a high usable proportion of the total capacity
- Continuous dosing cycle even while refilling
- Low machine downtime thanks to the use of foundry proven components
- Rapid cycle sequences thanks to automatic optimisation of dosing
- High precision of dosing thanks to precise monitoring of all operating parameters
- Simple setting of the casting weight by key input – no additional mechanical retooling necessary
- High melt quality due to oxide-free metal removal below bath level and constant metal temperature in the holding chamber
- Significant increase in productivity of your casting cell using the Top-Stop-Position®
- Energy-saving thanks to the use of high-quality insulating materials
- Long service life of the refractory material – many customers achieve more than 10 years service life
- Increase in the melt quality through the use of the new optional degassing technology via - e.g. for weldable die-castings



WESTOMAT®-dosing system for special customer application

Our Service and Delivery Program for nonferrous metals

Complete solutions for the foundry industry

STRIKOMELTER®
melting and holding
Al-chip melting

WESTOMAT®
holding and dosing

Holding and bale-out furnaces
with or without crucible

Low-pressure die-casting furnaces
with or without crucible

Magnesium melting and dosing units
alloying, recycling, melting and dosing
production support, know how transfer

Charging systems

Foundry accessories
degassing units
preheating units
transport ladles

Service
hotline
maintenance
refractory
optimisation

Spare parts

Worldwide representation

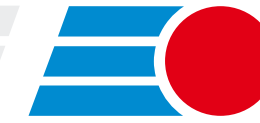
StrikoWestofen GmbH
Lorenz-Schott-Str. 5
55252 Mainz-Kastel
Germany
ph. +49 6134 207-6
fax +49 6134 207-877
info@StrikoWestofen.com
www.StrikoWestofen.com

StrikoWestofen GmbH
Fritz-Kotz-Str. 2-4
51674 Wiehl-Bomig
Germany
ph. +49 2261 7091-0
fax +49 2261 7091-107
info@StrikoWestofen.com
www.StrikoWestofen.com

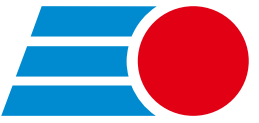
StrikoUK Ltd.
Unit 24 Jupiter Business Park
Hixon
Staffordshire, ST18 OPF
Great Britain
ph. +44 18 89271155
fax +44 18 892700 77
strikouk@strikowestofen.com

StrikoDynarad Corp.
501 E. Roosevelt Ave.
Zeeland, MI 49464
United States of America
ph. +1 616 7723705
fax +1 616 7725271
sales@strikodynarad.com
www.strikodynarad.com

Engineered Solutions from ingot to mould

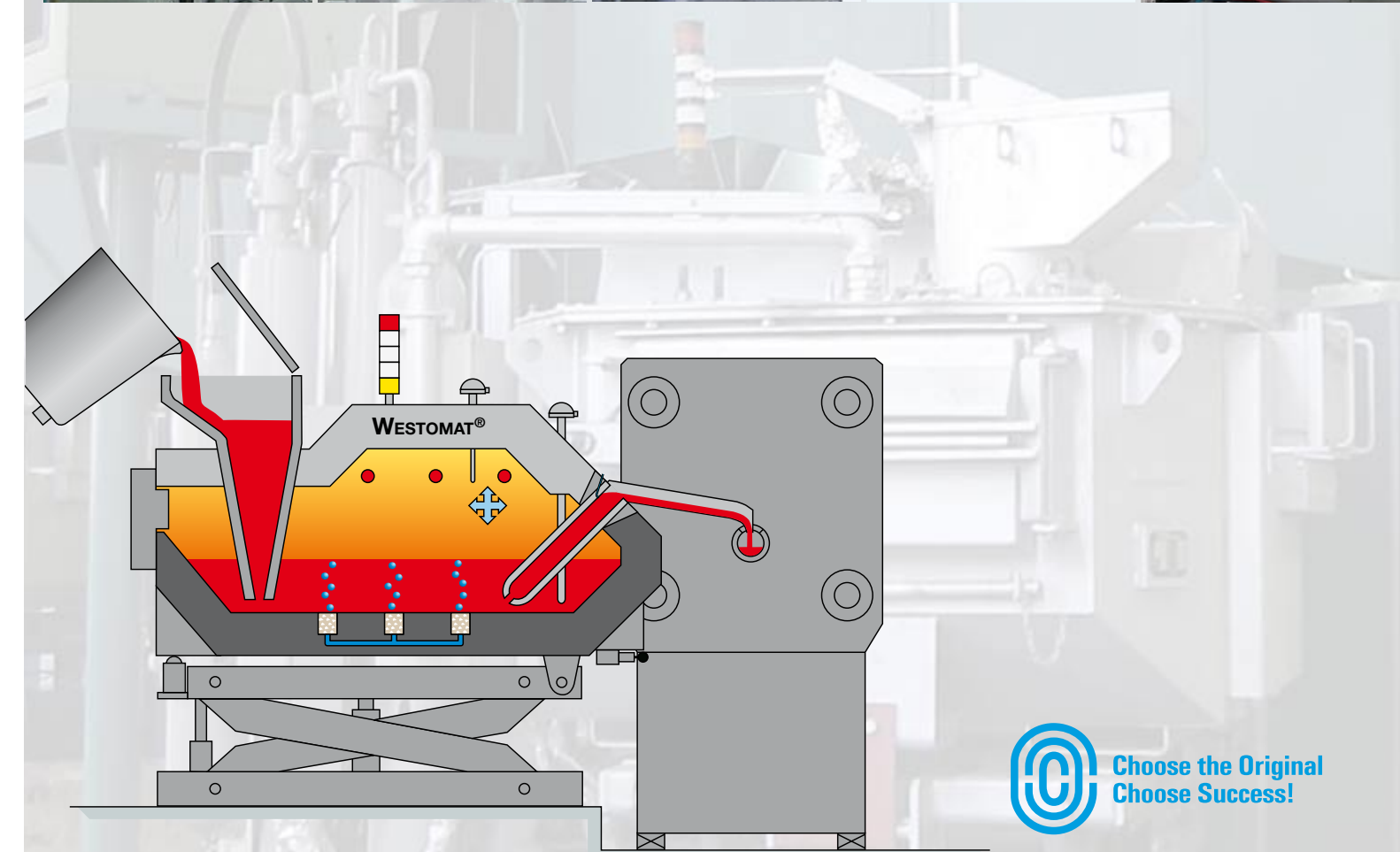



StrikoWestofen Group



StrikoWestofen Group

WESTOMAT® ProDos® xp for die-casting

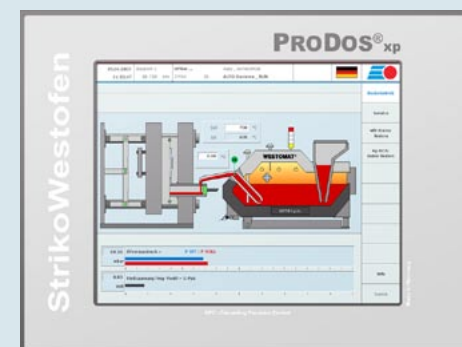


 Choose the Original
Choose Success!

Reliability

– but that's not all

You expect excellent performance - from the quality of the cast parts and the productivity of your machines. We focus on these points when developing our WESTOMAT® dosing furnace units. Our automatic dosing units have proven themselves in foundry operations – that is why over 4000 WESTOMAT® units are in use world-wide. We offer professional support for our top-quality products: Comprehensive expertise and innovative technologies - solutions custom-made for your requirements. We optimise your dosing process in our technical department – even for special applications.



Display view of the automated dosing process at the die-casting machine

ProDos®xp

– the electronic casting expert

The ProDos®xp dosing control unit is a precision control unit specially designed for die-casting. Our intelligent control unit analyses the processes of the die-casting machine continuously in the background and adapts the dosing sequence of the WESTOMAT® precisely for the respective production cycle. This microprocessor-controlled digital unit is used to control, regulate, operate and display the entire dosing unit. It is equipped with an interface for remote diagnosis. Production data can be read out via USB interface situated at the switch cabinet front by means of a USB stick. The unit is operated via a 15" touch panel. The entire process is displayed on the touch panel in real-time. There are standard dosing programs stored in the control unit which help you in setting optimised processes. All messages are shown as plain text. The user interface guarantees simple handling.

Refractory lining

– power-saving and durable

Low energy consumption and low running costs are your requirements of our dosing furnace unit. The use of top-quality refractory materials guarantees optimal insulation. The power consumption of our WESTOMAT® machines is approximately 50% of that of

comparable bale-out furnace systems. The refractory materials used are characterised by a long service life. The quality is selected in accordance with your alloys. A combination of material quality and internal shape of the furnace lining guarantee simple furnace cleaning.

Top-Stop-Position®

– always ready

The Top-Stop-Position® is a special variant in the dosing process. Metal is stored just below the top of the dosing tube at all times - that means: permanent dosing readiness. Interruptions in the production of the DCM or variations in the cycle time therefore do

not cause additional delays - your advantage: increased productivity.

WESTOMAT® ProDos®xp for die-casting



Operating

– even more comfortable

Thanks to the 15" touch display. Operating the WESTOMAT® is pretty easy! After setting the standard dosing program all you have to do is entering the dosing weight and the metal temperature. The dosing process is now set with the help of only two parameters – without any supplementary adjustment. The dosing control permanently analyses the time parameter of the die-casting cell: Deviations are immediately detected and automatically balanced.

Once WESTOMAT® – always WESTOMAT®!
Six WESTOMAT® units in a new-built foundry in service.

Dosing

– how it works

The WESTOMAT® ProDos®xp is a crucible-free dosing furnace for fully-automatic supply of metal to a die-casting machine. In order to transfer the metal, overpressure is built up in the furnace chamber and the melt is raised to the Top-Stop-Position® (figure 1) in the dosing tube. If the die-casting machine requires metal, the pressure in the furnace chamber is increased until the melt flows over the pouring rim to the filling chamber. When the preset quantity is reached, the dosing procedure is terminated by reducing the pressure. The metal then returns to the Top-Stop-Position® (figure 3) and the WESTOMAT® is immediately ready for the next dosing procedure.

Fill level

– always under control

Our fill level control guarantees high operating safety. The current bath fill level is recorded and monitored via Level Scanning. This measurement system operates free from external influences and is therefore extremely precise. The current fill level is shown via a signal lamp. The WESTOMAT® is charged via a filling funnel. The metal is supplied and removed below the surface of the bath. The filling process does not affect production, as the dosing unit remains ready for operation even during refilling.

Heating

– a reliable solution

You expect reliability, robust construction and precision. Durable SiC heating elements which have been proven in day-to-day foundry operation are installed in the roof area of the inner furnace chamber. The temperature is controlled via a heating element installed in the melting bath and the use of top-quality control electronics guarantees minimal temperature variations in holding mode. If the melt is too cold when it is poured in, a higher power setting is automatically activated and the metal is heated without overheating until it reaches the selected temperature value.

Lift-tilt frame

– variability as standard

The scissor lifting table equipped with a hydraulic cylinder and manual pump (or hydraulic assembly) is used to reach the various pouring positions of the die-casting machine. Tilting the WESTOMAT® completely empties the furnace body - thus making alloy changes easy.

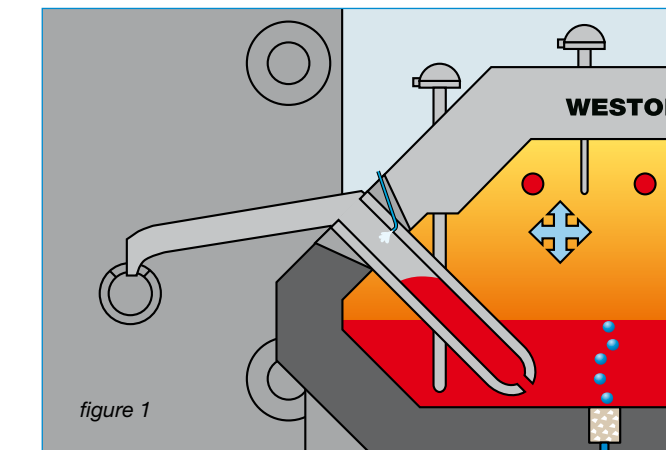


figure 1

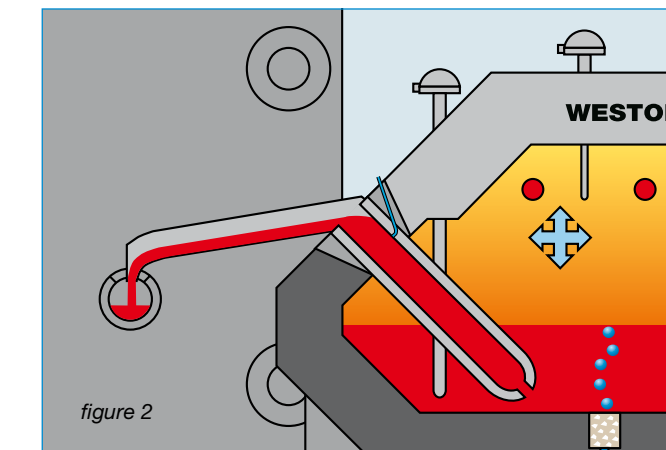


figure 2

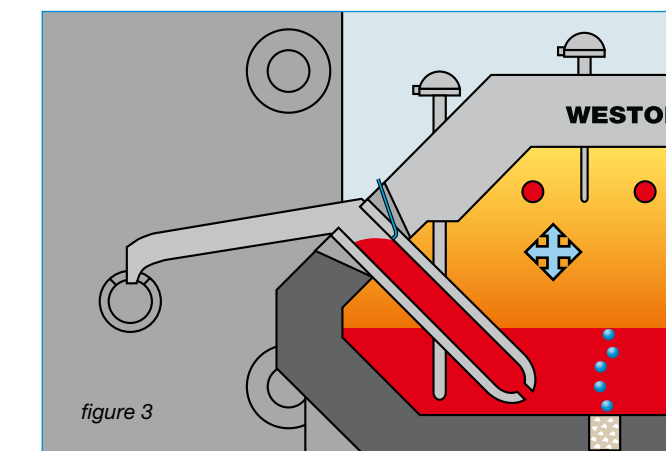


figure 3

