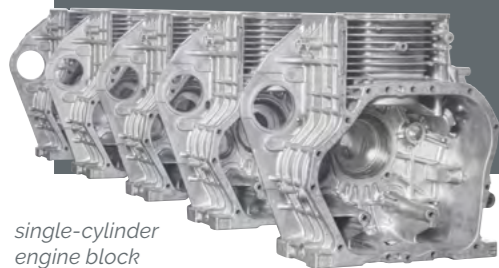


## + OTHER APPLICATIONS

Our in-house foundry, equipped with three completely automated HPDC machines (1900, 2500 and 3000 tons) has provided us with a wealth of experience in producing components for the **industrial sector**:

- engines and generator housings
- solar inverter cases
- lamp posts
- LED support panels
- carter mowers
- etc.



single-cylinder engine block

### Costamp headquarter

Costamp began in 1968 as a small family business. It has evolved, developed, and purchased other companies over the years.



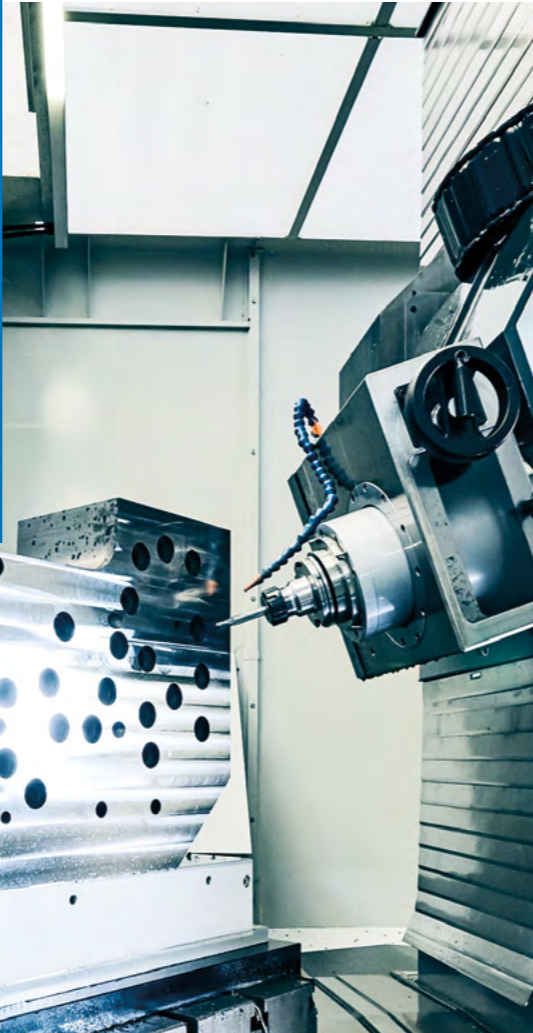
Via Verdi, 6 - 23844 Sirone (LC)  
T. (+39) 031 875195  
F. (+39) 031 875196  
info@costampgroup.it

### Costamp HPDC

The design and manufacture of die-casting dies is based at our Sirone headquarters in the province of Lecco, operational since 1999.

[costampgroup.it](http://costampgroup.it)

**Our core business is the manufacture of aluminium and magnesium die-casting dies for the automotive sector**



## + APPLICATIONS

### POWERTRAIN

- gearbox housings
- cylinder blocks
- flanges for engines in hybrid configuration
- cylinder head covers
- clutch housings
- steering housings

### STRUCTURAL PARTS

- front/back cross-members
- window and door frames
- instrument panels
- shock towers
- bearings
- torque box
- soft top frontbows
- central armrest

### TRUCK

- transmission housings
- fly-wheel housings
- oil pans
- cover cooling conducts
- ladder frames
- camshaft housings
- suspension supports

### ELECTRIC VEHICLES

- battery housings
- squirrel-cage rotors

# OVERVIEW

**TYPE**  
die-casting dies

**ALLOY**  
aluminium and magnesium

**MARKET**  
automotive and industrial applications

**SIZE**  
for HPDC machines from 500 to 4500 tons

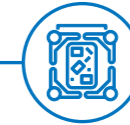
We are committed to meeting the needs and requirements of the foundries that use our dies. We guarantee a quality product and optimization of production timescales. Thanks to our knowledge and expertise we have developed an efficient and reliable **production process** combining experience, technology and innovation to offer **complete, integrated solutions**.



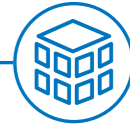
**PROJECT MANAGEMENT**  
We manage each project phase with the utmost professionalism. We offer **complete solutions** and support for each part of the production process, from the design of the component to mass production.



**DESIGN and CONSTRUCTION**  
The design process is carried out in **collaboration with the client** to create a product that meets required production and quality standards. We use the most up-to-date versions of market-leading software.



**SAMPLING and PROCESS DEVELOPMENT**  
Our **in-house foundry** allows us to carry out dimensional and metallurgic samplings, process development, Run@Rate and on-site tuning, providing a **complete, comprehensive service**.



**PRODUCTION**  
Our die-casting foundry is also available for: **pre-series, prototypes, special runs and small to medium batches**.

## OUR TURN-KEY PROJECT MANAGEMENT SERVICE

